



Aluminum/Steel Fender Flares INSTALLATION INSTRUCTIONS

3101 W. FM 544
Wylie, TX 75098
866.342.0977
BLKMTNJeep.com

Part #BMFF4

****READ INSTALLATION INSTRUCTIONS ENTIRELY PRIOR TO INSTALLING PRODUCT & MAKE SURE YOU HAVE ALL HARDWARE BEFORE INSTALLATION****

BEFORE YOU START



Safety is the utmost priority! Ensure you're utilizing a flat, level surface for this installation.

Remove the wheel/tire for the fender you're working on. Yes, the install is possible with the wheel/tire still on but will limit the amount of workspace available (depends on tire size)

**See your Owner's Manual for the proper way to remove your tire/wheel assembly.*

↓ START WITH THE FRONT FENDERS FIRST ↓

1. REMOVE FENDER HARDWARE



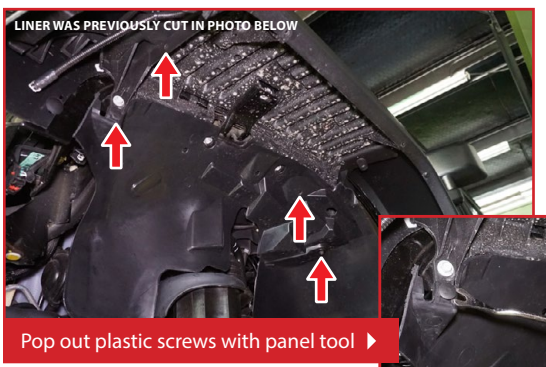
Start by removing the six (6) plastic plugs on the under-side of the fender lip.

PRO TIP: You can also use a drill bit the same size as the diameter of the plug to remove them. Plugs will not be reusable after either method.



PICK TOOL

2. REMOVE STOCK LINING



Remove the series of bolts and plastic screws that hold the plastic liner to the inside of the fender using a 10mm socket and panel trim tool.

The red arrows show where those attachment points are. Check the area for more bolts/screws to remove.



PANEL TRIM TOOLS



10MM SOCKET

3. REMOVE STOCK FENDER



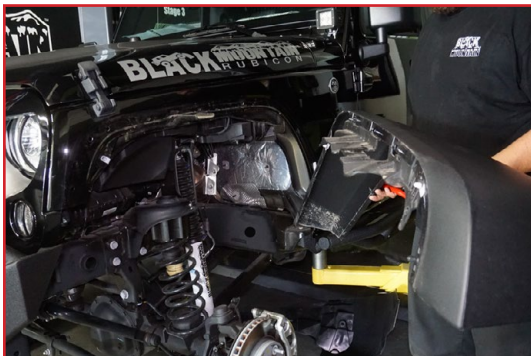
Remove the series of bolts and plastic screws that hold the stock fender to the body using a 10mm socket and panel trim tool.



Some clips use “fins” on the back-side to stay in place (they look sort of like a Christmas Tree). When removing these clips, use needle nose pliers to squeeze the fins together and pull the clip out along with the fender.



PRO TIP: Ask a friend for help at this point. The additional support will ensure safety and aid in easy removal.



Be prepared to work a little muscle into removing the stock fender flares from the body. Jeep does a great job of making sure the flares do not come off easily.



PRO TIP: Make sure to disconnect the side light wiring prior to removing the stock fender.

REMINDER! You will reuse your stock side light wiring for the aftermarket light. Do not damage the wiring during disassembly.

4. UNBOX BLACK MOUNTAIN FENDERS



In addition to the Fender Flares, you will receive a box of hardware that includes everything for the install.

What's in the box:

- Front & Rear Fender Flares
- Set of Foam Rubber Trim
- Set of Side Light mounts
- Front install hardware
- Rear install hardware

5. INSTALLING FOAM GASKET



Use super glue for stronger adhesion ▶

Set one of the front fender flares up so the inside is facing up. Pick the Foam Trim labeled with the "F" for "Front". It is written on the outside of the roll near the end.

Remove the adhesive backing and line the entire inside of the Fender as shown in the photo to the left. Cut excess off.

We strongly suggest using super glue as additional adhesive to be used in conjunction with the foam gasket.

PRO TIP: Take your time lining the foam trim. You will need the remainder of the roll for the other front fender flare.



With the foam gasket installed and adhered to the fender flares, use a box cutter to create notches for the mounting holes.

Start small and cut as needed. It's easier to take away material than to add it.

PRO TIP: Use a fresh blade in your cutter, or a sharp knife – it will make it much easier. Some areas may need more area in the notch to compensate for the bolt.

6. INSTALLING FENDER FLARE *(You're getting closer!)*



Locate the bag of stainless hardware, unpack and separate items like the following:



24MM BOLT

M8 WASHER

M8 NUT



Position the new Black Mountain fender flare up onto the body of the Jeep while lining up the mounting holes.



- Install washer onto bolt
- Install bolt into mounting hole
- Install washer on other end
- Tighten with nut

NUT | WASHER | BODY/FENDER | WASHER | BOLT HEAD

PRO TIP: Ask a friend to hold the fender in place while you install a couple bolts to secure the fender to the body.



Tighten hardware like you would lugnuts on a wheel – skip over one and tighten all together rather than inline.

The last bolt near the bottom tends to be close to the tubing. You may need to modify the washer to compensate for the tubing. Round out a small notch using a grinder or dremel tool to help get the washer flush.

↑ REPEAT STEPS FOR THE SECOND FRONT FENDER ONLY ↑

7. TRIMMING FENDER LINING



STOCK LINING

Before re-installing your fender liner you need to trim off some excess to make it fit the new fender flares.



TRIM

Position your liner into the wheel well, mark a line a little further out from where the fender meets the body. This will be your cut-line.

PRO TIP: We like to leave a little bit extra lining outside of the well and TUCK the excess in behind, this helps the overall look but ultimately is up to you. We suggest cutting off a little at a time until you get to where you want.



INSTALLED

The process is the same for all fender linings. Reference these steps for all lining installations.

8. INSTALLING SIDE LIGHT



Locate the Side Light bracket in the hardware box and install the rubber grommet included with the side light assembly you received with your fenders.

Press the grommet into the bracket.



In the same box is the actual side light with a white and black wires sticking out of it.

Press the light into the grommet.

9. WIRING SIDE LIGHT



Strip black and white wires coming from light back about a 1/2 inch.



Cut your stock side light wiring as directed here. Strip back wires to black plug.



Before twisting the white and black wires together, make sure to slip on the heat shrink tubing on to each wire. Twist together. Solder.



Heat up the heat shrink tubing over the soldered wire for protection.



This is what you should end up with.

SOLDERING vs. TWIST CAPS

We recommend soldering the wires together for a lasting connection, but you can also use twist caps as well if you're not confident with soldering.

9. INSTALL SIDE LIGHT BRACKET



Install the final Side Light assembly with the same hardware used to attach the fender flare to the body.



24MM BOLT



M8 WASHER



M8 NUT

↓ NOW INSTALL THE REAR FENDERS ↓

10. REMOVING REAR FENDER FLARE



Start by removing the plastic plugs on the under-side of the fender lip.

PRO TIP: You can also use a drill bit the same size as the diameter of the plug to remove them. Plugs will not be reusable after either method.



PICK TOOL



Remove rear fender liner.



PANEL TRIM TOOLS

PRO TIP: Practice the same techniques explained in steps #1 and #2. The rear fenders do not have any bolts, only plastic "Christmas Tree" like fasteners that hold the fender to the body. You can either take the slow and methodical approach, or, if you're not going to ever reinstall these flares, you can take the more "aggressive" approach.



Remove rear fender.



PANEL TRIM TOOLS



11. INSTALLING REAR FENDER FLARES



Locate the bag of black/stainless hardware, unpack and separate items like the following:



12. DRILL OUT MOUNTING HOLES



Drill out the holes with the arrows shown with a 19/32 sized drill bit, these are where the rubber plugs will go.



19/32 DRILL BIT



PRO TIP: Go slow and keep steady. You're increasing the size of the existing holes to allow enough room for the rubber spacers in the next step.



Install the rubber spacers included in the hardware kit. They are shaped like a "T" from the side. The smaller end goes into the body.



RUBBER PLUG

13. INSTALL RUBBER TRIM

→ REPEAT STEPS #5 AND #6 TO INSTALL THE RUBBER TRIM ON THE REAR FENDERS, THE SAME WAY YOU INSTALLED IT ON TO THE FRONT FENDERS. ←



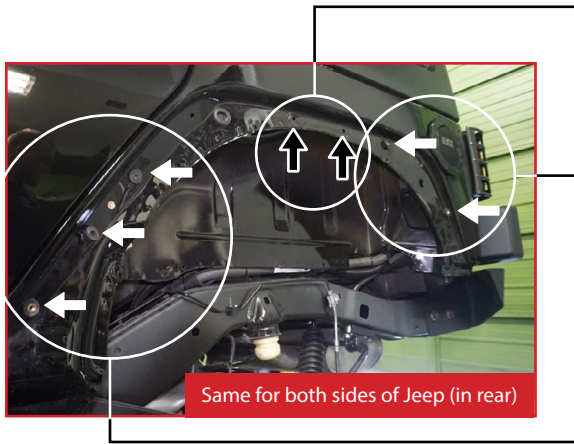


Figure A

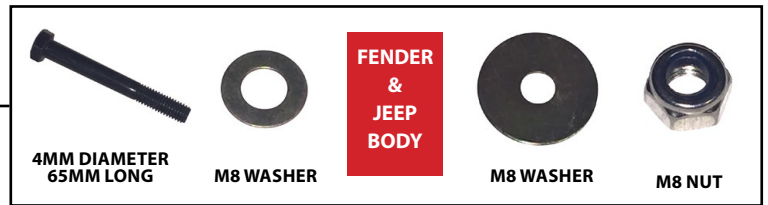


Figure B



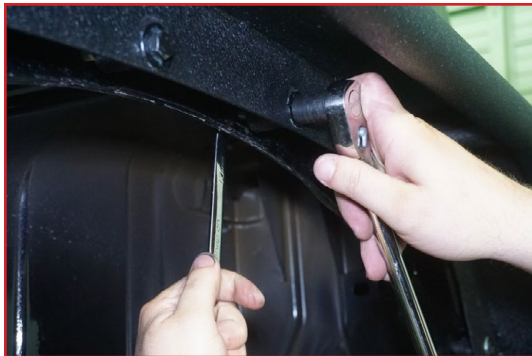
For Figure A & B, install the bolt through the washer then insert through fender and Jeep body and place washer/nut or rubber plug on the opposite side to attach flare.

14. INSTALL REAR FENDERS



Position the new Black Mountain fender flare up onto the body of the Jeep while lining up the mounting holes using the diagram above as a guide for which hardware to use.

PRO TIP: Install the two (2) bolts in the top holes (Figure A) first to hold the fender in place while you install the rest of the hardware.



- Install washer onto bolt
- Install bolt into mounting hole
- Install washer on other end
- Tighten with nut



Position your liner into the wheel well, mark a line a little further out from where the fender meets the body. This will be your cut-line.

PRO TIP: We like to leave a little bit extra lining outside of the well and TUCK the excess in behind, this helps the overall look but ultimately is up to you. We suggest cutting off a little at a time until you get to where you want.

15. COMPLETE



BEFORE



AFTER

Please visit BLKMTNJeep.com or call us at [866.342.0977](tel:866.342.0977) for more information.

Thank you for choosing Black Mountain Parts & Accessories.