



OFF-ROAD JEEP PARTS & ACCESSORIES

## BODY LIFT 2-DOOR & 4-DOOR

**BM04520** – 2007 to Current Jeep Wrangler JK



OFF-ROAD JEEP PARTS & ACCESSORIES



## Introduction

Black Mountain® Off-Road Parts & Accessories is your #1 source for quality Jeep parts and accessories. To assure your safety and proper installation of this product, take a moment to read all instructions and proper installation of this product, take a moment to read all instructions and Product Safety Information before trying to install your Black Mountain® product. Current OEM suspension design is complex: meaning safe and proper installation requires understanding OEM service techniques for disassembly and assembly of the components indicated together with the instructions and warnings set out below and in the OEM Service Manual and your Owner's Manual.

*Black Mountain® strongly recommends seeking advice from or having this product installed by a professional mechanic who can inspect your suspension, confirm compatibility with your tire and wheel choice and, if needed, reset alignment to optimize your steering.*

## **Product Safety Information**

Throughout these instructions, important safety information is generally preceded by one of three signal words indicating the relative risk of injury. The signal words mean:

**! WARNING** A hazardous situation which, if not avoided, could result in death or serious injury. You can be killed or seriously hurt if you do not follow instructions.

**! CAUTION** A hazardous situation which, if not avoided, could result in minor or moderate injury. You can be moderately HURT and also may suffer property damage if you do not follow instructions.

**NOTICE** Careful attention is required to this instruction or operation but does generally not relate to personal injury. Damage to your product or other property may result if you don't follow instructions.

## **!WARNING**

Familiarize yourself with all vehicle manufactures' and Black Mountain® warnings, instructions and limited warranties before driving your modified vehicle. Also be aware many states / countries have laws governing on-road vehicle heights and modifications. You are responsible for assuring the safety and legality of your vehicle. A summary of current state vehicle laws is available at [www.sema.org](http://www.sema.org).



# STAGE III

Our best selling front bumper. Rugged finish, winch plate mount and a set of black d-rings for your off road adventures



STAGE I



STAGE II



## 8000LB WINCH W/ CONTROLLER

- Includes winch plate
- Designed to fit our bumpers seamlessly

There is a 1 year warranty for defective products. This warranty is valid for a one time replacement of the purchased part. Should the product be unavailable at the time a replacement is requested, we will refund you the money you paid for the part less shipping and handling charges. To obtain performance of this warranty, you should contact us and return the product as we instruct at your expense. A dated purchase receipt or other written proof that the product is within the warranty period will be required in order to honor your claim. This warranty is limited to the original customer, i.e. is not transferable to subsequent owners of the product.

Specifically excluded from this warranty are failures caused by misuse, negligence, modification, abuse, improper application, installation or operation, or by unauthorized service or use of unauthorized parts in connection with the product and inadequate maintenance, normal wear and tear or normal consumption of the product.

To the extent allowed by law, this warranty sets out your exclusive remedies with respect to the product covered by it, whether for negligence or otherwise. We will not be liable for incidental or consequential damages, such as telephone calls, loss of time, inconvenience, commercial loss, personal injury damages, etc. THIS WARRANTY IS IN LIEU OF ALL OTHER EXPRESS WARRANTIES. ANY WARRANTY IMPLIED BY LAW, WHETHER OF MERCHANTABILITY OR FITNESS FOR A PARTICULAR PURPOSE OR OTHERWISE, IS LIMITED TO THE PERIOD THAT THIS EXPRESS WARRANTY IS EFFECTIVE. No attempt to alter, modify, or amend this warranty shall be effective unless authorized in writing by one of our officers.

We and our subsidiaries, affiliates, licensors, service providers, manufacturers, content providers, team members, agents, Officers, and Directors will not be liable for any incidental, direct, indirect, punitive, actual, consequential, special, exemplary, or other damages, including loss of revenue or income, pain and suffering, emotional distress, any form of bodily injury, property damage, damage to other parts of the vehicle in which the parts was installed, or similar damages, even if one of us has been advised of such damages. In no event will our collective liability to any party (regardless of the form of action whether in contract, tort, or otherwise) exceed the cost of replacing the part sold.

## Tools Needed

Quantity	Description
2	Frame Jack stands
1	Floor Jack
1	5/8 Wrench
1	16 mm Socket
1	18 mm Socket
1	1/2" Ratchet
1	1/2" Socket Extension
1	Phillips screw driver
1	Torque wrench
1	2"X 4"X 12" jacking block
1	4"X 4"X 8" jacking block

## Part List

Quantity	Part Number	Description
12	M03763	Body lifts
24	S11082	Stud extenders
1	P11153	Thread lock
1	P21138	Daystar Decal
1	P10474	Warning Decal



**! WARNING: Always work with appropriate personal safety gear including safety glasses, gloves and hearing protection if using air powered tools.**

Begin by inspecting the components & hardware for damage.

Then compare components & hardware to the bill of materials for completeness. If anything is missing/damaged, do not proceed with the installation. Please, call Black Mountain® (1.866.342.0977) and we will send you the missing or damaged components free of charge.

**! CAUTION: Vehicle must be raised to install Body Lift Kit. Using a hydraulic chassis lift will greatly ease installation. If another jack is used, assure vehicle is level on a firm surface, in park (1st gear), rear, wheels blocked and jack stands in place to support vehicle in case jack or vehicle shifts.**



#### **Installation Note:**

THIS KIT WILL ONLY FIT JEEPS WITH AN AUTOMATIC TRANSMISSION

#### **Installation steps**

1. The tools needed for installation and a list of parts included in the kit are listed on page 2. Make sure you have all of the proper tools and understand these directions before proceeding.
2. When working 2009 and up 2-door & 4-door models Jeep, you will have two (2) extra mounts and four (4) extra stud extenders.



#### **Black Mountain® Warranty**

Your Black Mountain® 1 year, one-time replacement warranty is provided exclusively by Black Mountain®, 3101 West FM 544 Wylie, TX 75098.

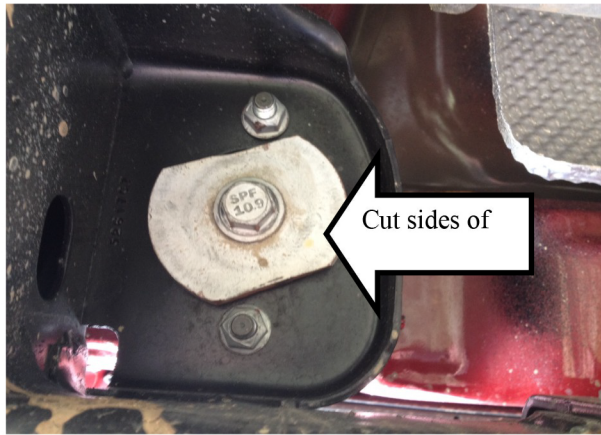
**What is Covered? Real Life Use, Off-Road & On:** Subject to the terms, exclusions and limitations herein, Black Mountain® warrants to the initial retail purchaser that your leveling kit shall be free of defects in material and workmanship for so long as it is properly installed on a single vehicle owned by the initial retail Black Mountain® purchaser.

#### **What is NOT Covered? Your Vehicle & Parts:**

Your Black Mountain® **Limited Warranty** does NOT cover: (a.) damage to your vehicle, vehicle systems (ex. electronic stability control) other products, components or property not manufactured by Black Mountain®, (b.) customer choice of vehicle configuration/tire and wheel combinations contrary to Black Mountain® recommendations, warnings or applicable laws, (c.) Acts of God, weather, corrosion, accidents, theft, vandalism, negligent misuse or intentional damage, other exclusions under your OEM Limited Warranty.

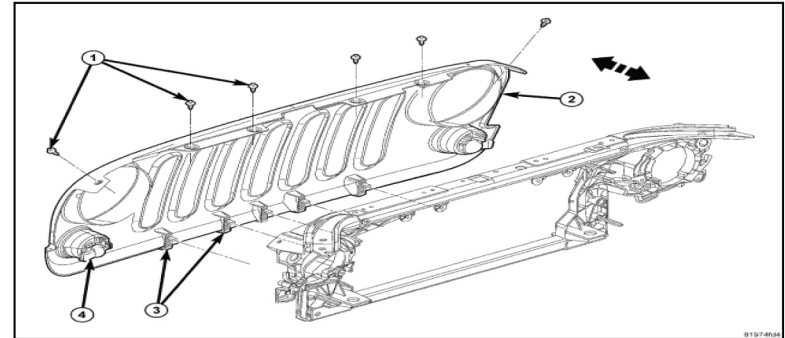


14. Close the hood.
15. Check that all the bolts and nuts are tightened down to spec.
16. On 2010 and Up JK you will need to cut two (2) flat notches in the two (2) rear body mount bolts as seen in photo so the washer will not hit the nuts.
17. Check all bolt and nuts after 500 miles.

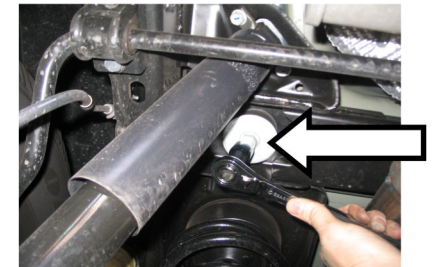
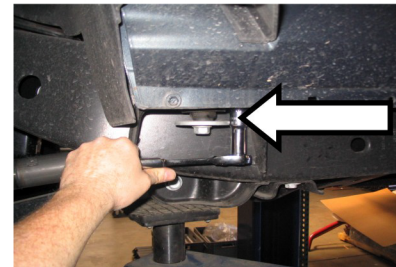


18. With the vehicle on the ground, cycle the steering wheel side-to-side and inspect suspension components, brake lines and tires to ensure there are not any clearance issues. Jounce the suspension to assure front suspension operates freely, brake lines retain proper slack at full extension and that they remain clear of springs or other obstructions.
19. Install "Warning to Driver" decal on the vehicle's sun visor or dash. The decal must be placed in a conspicuous location. Anyone that operates the vehicle must be made aware of the changes made.
20. After 500 miles of driving re-torque all of the hardware associated with the Body Lift kit installation to factory specifications. Repeat torque procedure as required.

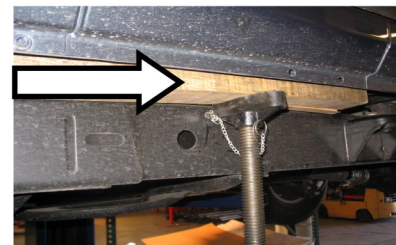
3. Place Jeep on level ground. Open the hood and use a Phillips screw driver to twist the center of the push pin insert to release and remove the six push pin fasteners (1), release the lower clips (3) and separate the grille from the Jeep and disconnect the electrical connectors (4).



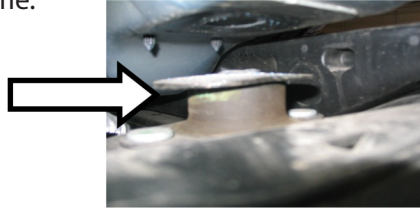
4. With a 16mm socket loosen the two nuts at each of the front core support body mounts. Then with an 18mm socket, loosen the bolts at the right and left sides of the frame body mounts. NOTICE: DO NOT remove nuts at this time. NOTICE: a 2-door will have ten (10) mount and a 4-door will have twelve (12) mount locations.



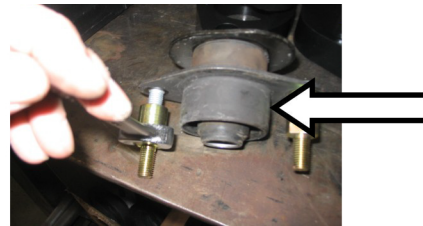
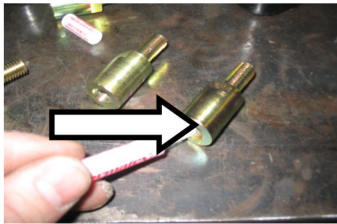
5. Place the floor jack under the Jeep tub between the front and rear wheel. Rise up the jack with the 2x4 jacking block on top of the jack and remove only one side at a time of the bolt and nuts from the Jeep mounts.



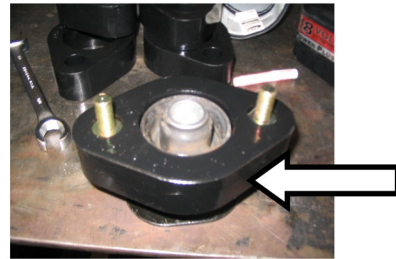
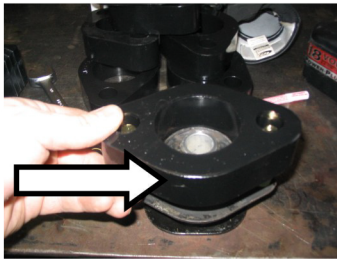
6. Slowly raise up the jeep with the jacking block between the jack and the tub of the jeep, about 4" off the body mounts and place a 4x6 jacking block between the frame and the jeep tub. Remove one mount at a time.



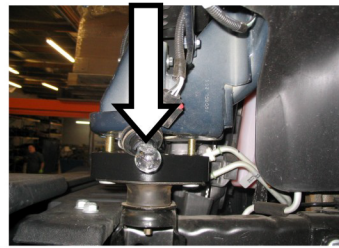
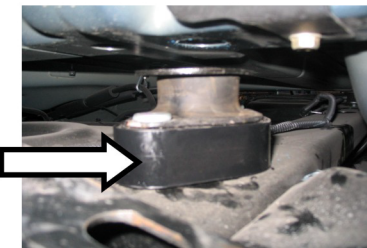
7. Place thread lock on the stud extenders (2 at a time). Using a 5/8 wrench, install the extenders on the body mount and tighten down.



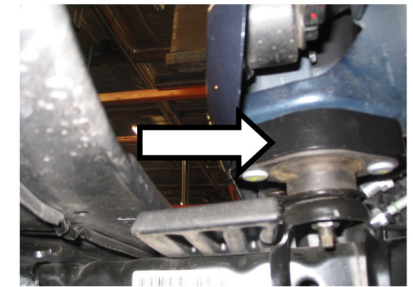
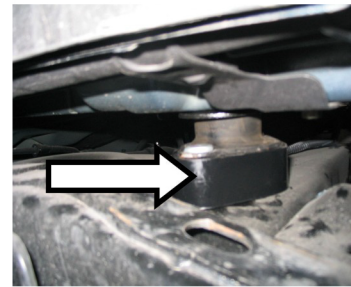
8. With the extenders tight install the body mount spacer over the stock mount.



8. With the spacer mount installed. Install the mount into the frame support. NOTICE: When installing the front grill mount put the two (2) studs in the grill frame first, using the two (2) studs and nut to hold the mount in the grill.



10. Repeat steps 7 to 9 with the remainder of the mounts on this side.
11. After you have installed on one side, remove the 4x6 jacking block and lower down the Jeep tub onto the body mounts and install the two (2) nuts and one (1) bolt per mount then tighten down and move the floor jack over to the other side and repeat steps 5 through 10. If all the mounts have been installed, remove the 4x6 jacking block and lower the Jeep tub onto the body mounts.



12. With all the body mount spacers installed remove the floor jack. Use a 16mm socket and tighten all the two (2) nuts per mount down to 40 ft lbs. Using a 18mm socket tighten down the one (1) bolt per mount down to 80 ft lbs.
13. Connect the electrical connectors (4) and position the grill (2) onto the front end of the grill support and seat the clips (3) fully. Install the push pin fasteners (1).

