



TJ Rear Bumper – '76 to '06 INSTALLATION INSTRUCTIONS

3101 W. FM 544
Wylie, TX 75098
866.342.0977
BLKMTNJeep.com

Part #BM-JE0387DM1



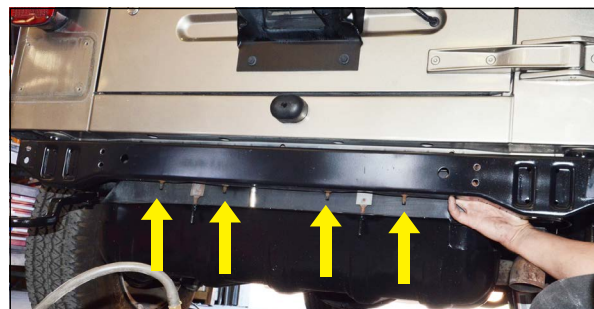
READ INSTALLATION INSTRUCTIONS ENTIRELY PRIOR TO INSTALLING PRODUCT

- 1) Remove factory bumper bolts, bumper and license plate holder.



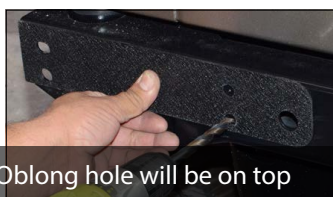
- 2) Drop rear section of the gas tank by removing the four remaining bolts on rear bumper that secure the tank to the bumper itself. Pry rear end of gas tank down 1.5" to 2" using a pry bar.

****Gas tank sits very close to rear bumper. To avoid damaging tank, drop the rear section of the tank down prior to drilling holes – re-secure tank after holes are drilled.***



- 3) Using template provided line-up holes, mark placement for new holes, drill using 31/64" bit. (or a 7/16" bit & drill out to 5/8" using a stepped bit)

***Use the existing holes as a guide for the template, make sure template is level before drilling**



NOTE: Holes should match. Oblong hole will be on top



- 4) Position new bumper against rear vehicle frame.
Using mounting brackets provided, mount bumper to frame with (1) 12x30mm bolt, (1) 12mm flat washer and (1) 12mm lock washer for each hole.



Remove body mount bolt for added room to secure bracket(s)

Before installing the Tire Carrier, remove the stock third brake light assembly that sits on the tailgate.



- 5) The stock brake light assembly is essentially two pieces connected by a few bolts and wired into the rear of the Jeep through the tailgate.



Disconnect wiring on inside panel of tailgate



Unbolt brake light from stock tire carrier mount



Gently pull wiring out of tailgate and tire carrier



Unbolt stock tire carrier from tailgate

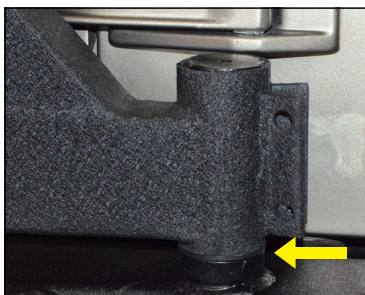


Once removed, replace bolts into holes for looks



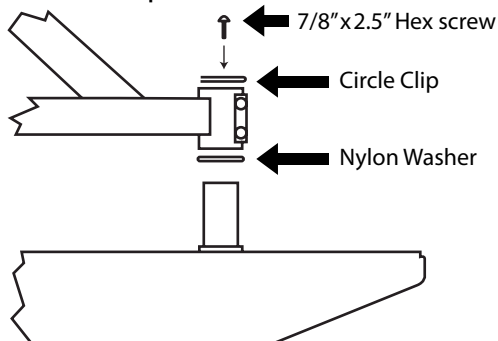
Remove stock tire carrier pad and replace screw

- 6) Now to install the tire carrier on top of the bumper: Place the nylon washer over rear bumper post, then place tire carrier on top, swing it to the closed position and latch it into place.



MUST DO: Mount tire before latching carrier closed. Weight ensures carrier closes correctly.

- 7) Carefully place the Circle Clip on top of the post over the tire carrier portion.



- 8) Secure carrier with 7/8" hardware & flat washer

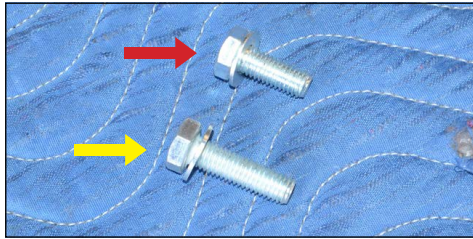
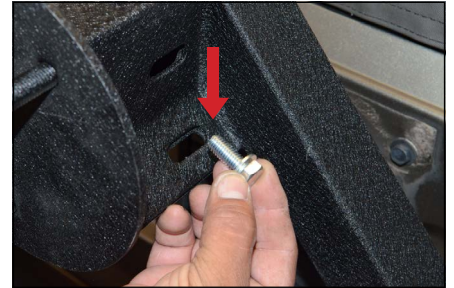
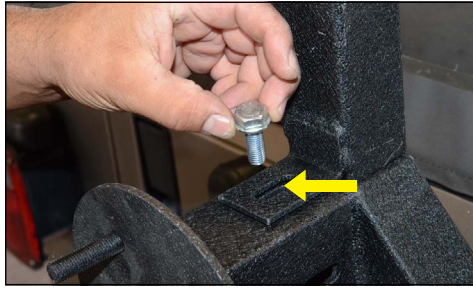


- 9) Install Hex Screw on top of the bumper post

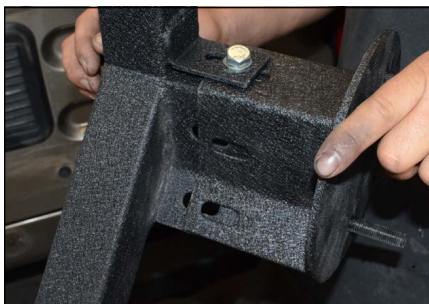


7/8" x 2.5" Hex screw (shown above)

10) Locate tire mounting bracket, (3) 3/8 x 1" Hex head Bolts, (6) 3/8" Flat Washers, (3) Lock Nuts. Slide the tire mounting bracket over support bracket on carrier. Lineup the 3 slotted holes and install with the 3/8" hardware.



11) There are two sets of slotted holes. This is to accomodate oversized tires. Determine the best position for your tire size and then tighten all hardware on mounting bracket. For best results the back side of the tire should rest against the (triangle) tire carrier.



12) The license plate bracket will need to be modified to accomodate for the latch. Use a Dremel or some sharp wire cutters to remove a small notch from the bracket.



COMPLETED

