

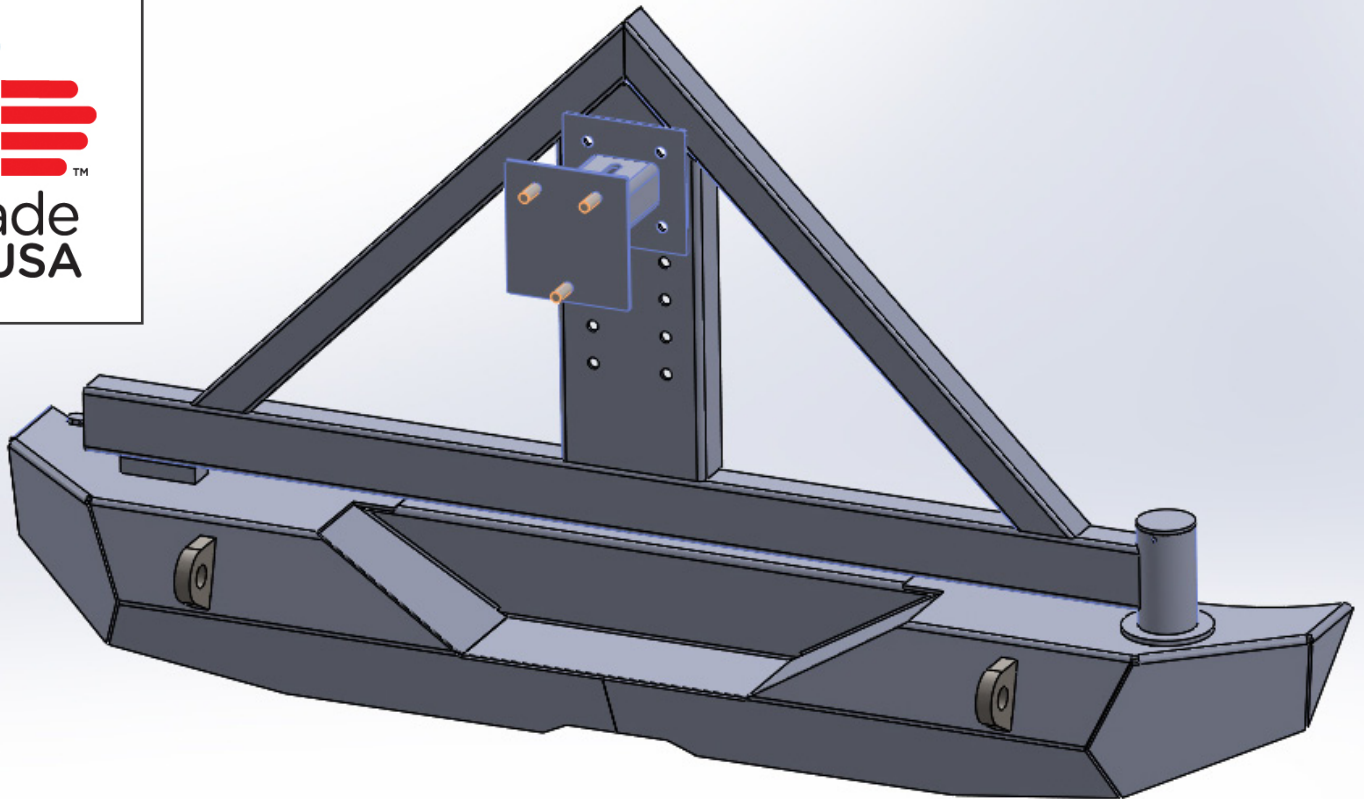


## Rear Recovery Bumper W/ Tire Carrier

Installation Instructions

### **BMAS-BPG-038TC-B**

Jeep Wrangler / Wrangler Unlimited 2007 - 2016



#### BMAS-BP-038TC-B Components

- 1) Rear Bumper
- 1) Tire Carrier Swingarm
- 1) Adjustable Tire Carrier Assembly
- 2) Bumper Mounting Brackets
- 2) Tapered Roller Bearings
- 2) Tapered Roller Bearing Races
- 1) Bearing Thrust Washer
- 1) Spindle Nut
- 1) Spindle Cover
- 1) Latch
- 1) Latch Release Handle
- 1) Latch Striker
- 1) Threaded Detent
- 1) Plastic Latch Cap

#### Hardware Kit Contents

- 6) 1/2" - 13 x 1 1/2" Hex Bolts (Gr. 8)
- 6) 1/2" - 13 x 1 1/2" Hex Bolts (Gr. 5)
- 16) 1/2" Flat Washers
- 8) 1/2" Lock Washers
- 4) 1/2" Nylon Locking Nuts (Gr.5)
- 2) 1/4" - 20 x 5/16" Set Screws
- 1) 7/16" Flat Washer
- 1) 7/16" Nylon Locking Nut (Gr. 5)
- 2) 5/16" - 18 x 1 1/2" Hex Bolts (Gr. 5)
- 2) 10 - 24 x 3/4" buttonhead Phillips screw
- 2) #10 Flat Washers
- 2) 10 - 24 nylon locking nuts

**!!! WE RECOMMEND TWO PEOPLE FOR THIS INSTALLATION !!!**

**\*READ INSTALLATION INSTRUCTIONS ENTIRELY AND ENSURE YOU HAVE ALL PARTS\***

**\*AND HARDWARE LISTED PRIOR TO BEGINNING THIS INSTALLATION\***



# Rear Recovery Bumper W/ Tire Carrier

## Installation Instructions

### **BMAS-BPG-038TC-B**

Jeep Wrangler / Wrangler Unlimited 2007 - 2016

1. Remove contents from the box and check for missing pieces or damage. If parts are missing or damaged, please contact the original place of purchase.
2. Remove the spare tire from the mount, the 3rd brake light assembly from the housing, and unplug it. (See Figs. 1, 2, and 3)
3. Remove the 8 bolts from the perimeter of the spare tire mount and then re-install the hardware. (See Fig. 3)
4. Remove the tire snubbers from the rear door and put aside. (See Fig. 4)
5. Remove the 4 bolts from the bumper brackets on the frame rails (2 on each frame rail). Save hardware for later use. (See Fig. 5)
6. If equipped, remove the 4 screws at the back of the rear inner fender wells that go into the bumper. (2 in each fender well)
7. Remove the 2 bolts from the rear cross member that secure the factory rear bumper brackets. Loosen the 2 top bolts and swing the brackets up above the rear cross member. (See Fig. 6)
8. Remove the trailer wiring plug (if equipped) from the factory bumper and remove the factory bumper.
9. Remove the rear tow hook from the frame. (See Fig. 7)
10. Insert the new rear bumper mounting brackets into the frame rails and line up the welded nuts of the brackets with the 2 oval holes on the outside of each frame rail (See Fig. 8) and loosely install the lower (1) 1/2" - 13 x 1 1/4" bolt, (1) 1/2" lock washer, and (1) 1/2" washer into each rear bracket (See Fig. 9) to make installation of the rear bumper easier.
11. Place the new rear bumper assembly onto the rear of the vehicle and install the 4 bolts previously removed in step #5 to hold the bumper.
12. Install the (4) 1/2" - 13 x 1 1/4" bolts, each with (1) 1/2" lock washer and (1) 1/2" flat washer through the bumper and frame rails and into the rear bumper mounting brackets. Adjust the bumper to level and tighten all mounting hardware. (See Fig. 10)
13. Lightly coat the bearings and races with oil or grease and install the bearing races into the swingarm.
14. Place a bearing onto the spindle shaft (See Fig. 11), lower the swingarm down over the shaft and install the remaining bearing onto the shaft followed by the thrust washer and spindle nut (See Fig. 12), and then install the spindle cap using the 1/4"-20 x 5/16" set screws. (See Fig. 13)
15. Install the detent.
16. Install the handle on the latch. (See Fig. 14) then the striker pin into the bumper, and the latch onto the swingarm.
17. Align the latch and striker (See Fig. 15), close the latch ensuring that there are 2 clicks heard and the striker is fully seated into the latch, and tighten the latch while it is closed on the striker pin.
18. Determine which holes in the spare tire mounting plate will be used for your spare tire, install the tire carrier (See Fig. 16) using (4) 1/2 - 13 x 1 1/2" bolts, (8) 1/2" flat washers, and (4) Nylon locking nuts, then adjust the tire carrier and install your spare tire using the provided lug nuts.
19. Now install the plastic cap over the handle and insert it into the swingarm tube.
20. If you would like to trim your tire snubbers you may do so. To re-install the rubber snubbers, twist them back into the mounting holes in the rear door while pushing them in.
21. Tighten any remaining loose hardware to complete the installation.

# Rear Recovery Bumper W/ Tire Carrier

Installation Instructions

## **BMAS-BPG-038TC-B**

Jeep Wrangler / Wrangler Unlimited 2007 - 2016

Fig. 1



Fig. 2



Fig. 3

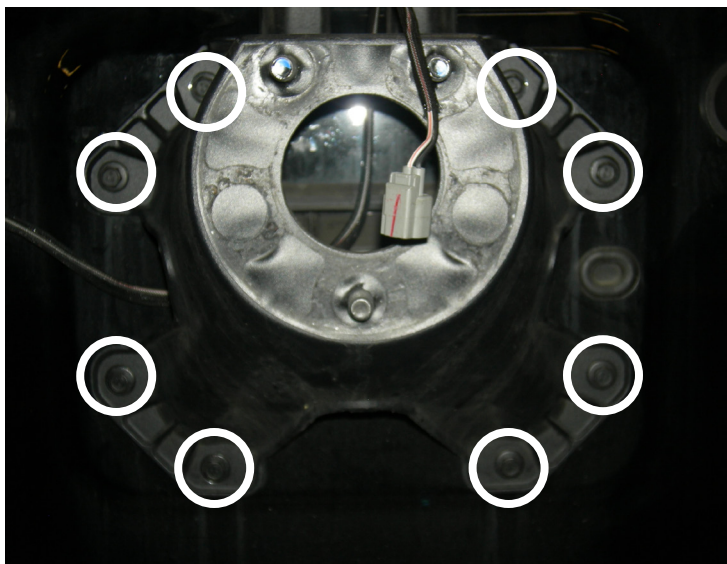


Fig. 4





# Rear Recovery Bumper W/ Tire Carrier

## Installation Instructions

### **BMAS-BPG-038TC-B**

Jeep Wrangler / Wrangler Unlimited 2007 - 2016

Fig. 5



Fig. 6



Fig. 7



Fig. 8



Fig. 9





# Rear Recovery Bumper W/ Tire Carrier

Installation Instructions

## **BMAS-BPG-038TC-B**

Jeep Wrangler / Wrangler Unlimited 2007 - 2016

Fig. 10



Fig. 11



Fig. 12





# Rear Recovery Bumper W/ Tire Carrier

## Installation Instructions

### **BMAS-BPG-038TC-B**

Jeep Wrangler / Wrangler Unlimited 2007 - 2016

Fig. 13



Fig. 15

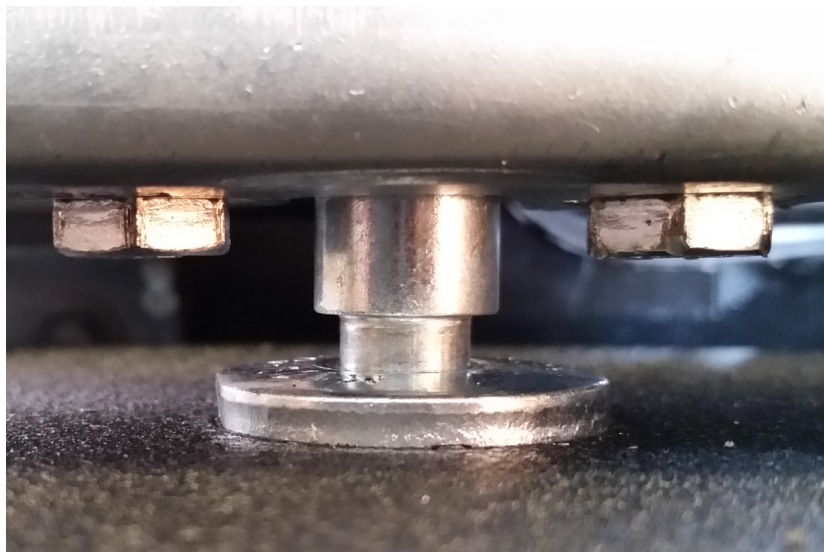


Fig. 14

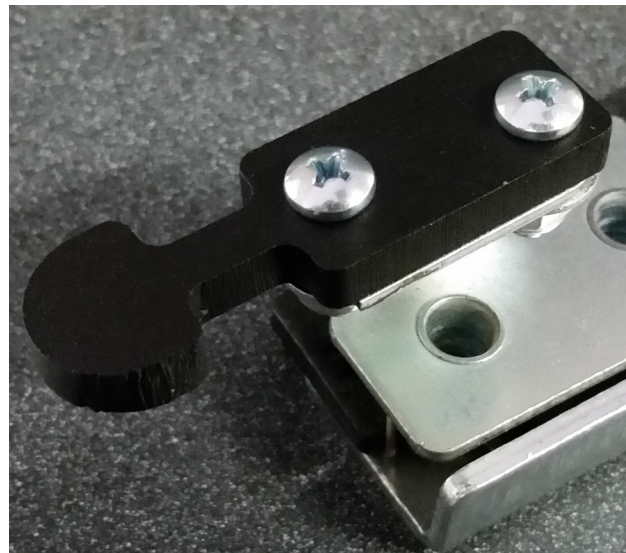
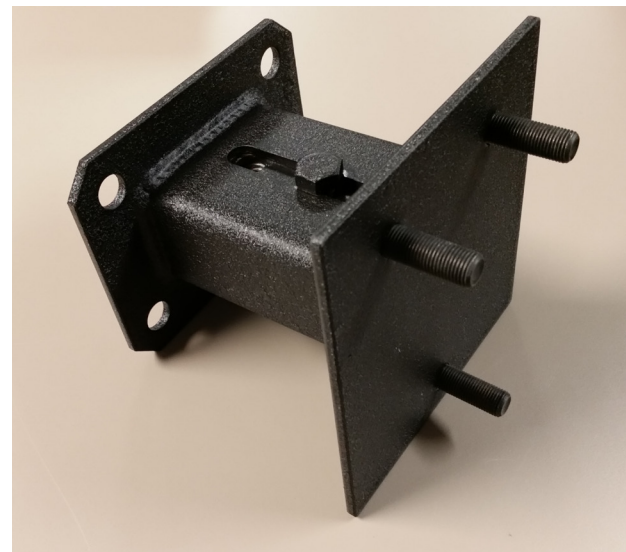


Fig. 16



**!!! THIS SWINGARM USES A TWO STAGE LATCH MECHANISM !!!**

**When properly latched there will be two distinct audible clicks from the latch mechanism too indicate that it is fully closed. Failure to properly latch the swingarm could cause injury or vehicle damage. !!!**

**Note: Re-check all hardware for proper tightness upon completion and periodically inspect hardware and parts for signs of wear throughout the life of the product.**